

# OPEN CALL

2026

GUIDE FOR  
APPLICANTS



## OPEN CALL FOR BOTTOM-UP STAKEHOLDER ENGAGEMENT INITIATIVES IN CANCER RESEARCH & CARE



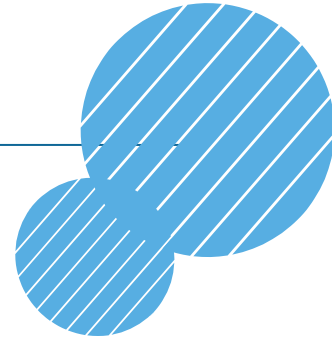
**PERIF&RMANCE**  
Science with Society for Mission Cancer



Funded by  
the European Union

---

# TABLE OF CONTENT



What is PERFORMANCE?	04
What is this call for?	04
Context. Current landscape	07
Who can apply?	07
What kind of activities are eligible?	08
The amount of funding and use	10
Important dates	11
Submission and evaluation process	12
Evaluation criteria and process of ranking	14
Other aspects	18
Frequently asked questions	20
Application form	24

# LIST OF ABBREVIATIONS

AI	Artificial Intelligence
BBMRI-ERIC	Biobanking and BioMolecular Resources Research Infrastructure – European Research Infrastructure Consortium
EHDS	European Health Data Space
ELSI	Ethical, Legal and Societal Implications
EU	European Union
FAQs	Frequently Asked Questions
NDA	Non-Disclosure Agreement
NGOs	Non-Governmental Organizations
PERFORMANCE	Public Engagement in Research Infrastructures for Mission Cancer: Managing Complexity of Emerging Technologies
PPP	Public-Private Partnership
SME	Small and Medium Enterprise
T#	Task Number
WP#	Work Package Number

---

# What is PERFORMANCE?

**PERFORMANCE** stands for “Public Engagement in Research Infrastructures for Mission Cancer: Managing Complexity of Emerging Technologies”, and it aims to **enhance stakeholder engagement in cancer research to improve its relevance, equity, and impact.**

Moving beyond traditional models of science communication, PERFORMANCE focuses on engagement with **multiple stakeholders**, patients/research participants, research and healthcare professionals, industry, and policymakers **in innovative ways**. In doing so, the project explores the ethical use of AI in health and the European Health Data Space (EHDS), with a strong focus on societal trust and inclusion, especially in the context of the EU’s Mission: Cancer implementation. The project aims to ensure its outcomes are scalable and aligned with regional needs, contributing to lasting changes in cancer research and policy across Europe. To achieve this, it is launching an **open call for funding** to promote local, bottom-up engagement activities.

PERFORMANCE is an international research consortium funded by the European Union’s Horizon Europe research and innovation program under grant agreement number 101216808.

## WHAT IS THIS CALL FOR?

PERFORMANCE aims to **co-create pioneering engagement strategies through a research design with a bottom-up approach**. In this regard, the project launches an open call enabling local actors to implement **innovative engagement practices within the context of cancer research and care, and/or cancer survivors support networks**.



These activities will ensure that participation is culturally appropriate, technically feasible, and contextually relevant, while evaluating these engagements from several angles aligned with the **EU Cancer Mission objectives**.

Ultimately, the final aim of **co-creating innovative engagement practices with local stakeholders across Cancer Mission priorities** is to foster technological advancement, scientific progress, and societal transitions in an ethical and inclusive but also strategic and sustainable manner.

Specifically, PERFORMANCE invites organizations in Europe to design and conduct local or regional engagement activities on cancer research and care.

PERFORMANCE welcomes, among others, activities connected to biobanks and to the use of artificial intelligence (AI) and the European Health Data Space (EHDS), which fosters more aware, active and reflexive forms of participation that also reach new or underrepresented actors, strengthens the effective inclusion of vulnerable groups, and creates space for open dialogue on trust and transparency, as well as helps citizens and stakeholders to engage constructively with how innovative cancer treatments are developed and used.

Through the open call for engagement activities, PERFORMANCE will fund up to **15 local/regional engagement proposals** that will be selected for funding (each up to **€10,000**) and accompanied by social science research.

# LOCAL OR REGIONAL ENGAGEMENT ACTIVITIES ON CANCER RESEARCH AND CARE

## KEY ASPECTS FOR THE CALL

### ENGAGEMENT STRATEGIES

The project aims to promote active and meaningful public engagement within the context of cancer research and care, and/or cancer survivors support networks. It welcomes the integration of major developments, such as the EU AI Act and the European Health Data Space (EHDS), and the different local and regional ecosystems diversity.

### RELEVANCE TO EU MISSION

Proposals must demonstrate a clear connection to one of the four strategic goals of the EU Cancer Mission: understanding cancer; prevention and early detection; diagnosis and treatment; improving quality of life for patients and families.

### FLEXIBLE APPROACHES

The call is open to any suitable engagement format, both theoretical and practical in nature, for example innovative participatory and co-creative formats, educational and capacity-building initiatives, arts-based and creative approaches, or communication and public outreach activities.

### INNOVATION AND DESIGN QUALITY

Up to 15 local or regional engagement projects will be selected for funding, each up to **€10,000**, for eligible costs like personnel, consumables, travel, and services; and accompanied by social science research.

Mission  
Cancer

15  
Proposals

10.000€  
Funding

Local  
innovative  
actions

# WHAT IS THE ULTIMATE AIM OF THIS PROJECT?

## Mission

There is a clear need to strengthen the ethical, legal, and social framework of cancer research by adopting a holistic approach that ensures innovation—particularly in areas driven by large-scale data infrastructures, AI, and the European Health Data Space (EHDS)—remains equitable, inclusive, and aligned with societal values. PERFORMANCE addresses these challenges by identifying gaps and best practices in public engagement to support more participatory and responsive health research ecosystems. By developing a robust, scalable framework tailored to local contexts, the project aims to enhance trust, promote responsible implementation of AI and EHDS in biobanking, and foster transdisciplinary, bottom-up collaboration with diverse stakeholders across the EU Cancer Mission.

## Impact

By collaborating with regional, multidisciplinary and diverse stakeholders, PERFORMANCE promotes:

- More equitable, participatory, and responsive technological and scientific progress.
- Societal transitions toward trust and equity, considering new emerging technologies and advancements.
- Innovative engagement models for cancer research



## CONTEXT

# CURRENT LANDSCAPE OF STAKEHOLDER ENGAGEMENT IN CANCER RESEARCH AND KEY CHALLENGES

Based on the preliminary mapping of the European biobank landscape, **stakeholder engagement activities** appear highly heterogeneous in scope, format, and level of formalization. Nevertheless, a limited number of overarching objectives can be discerned across initiatives, ranging from raising awareness about the role and societal value of biobanks, to eliciting stakeholder evolving needs and expectations, facilitating mutual learning and exchange of good practices, supporting harmonization efforts, and fostering sustainable forms of collaboration. These objectives suggest that engagement is increasingly perceived not as a single ‘correct’ activity, but as a dynamic process embedded within broader organisational and network-level strategies.



However, the landscape remains characterized by significant exploratory potential, particularly regarding the optimization of engagement frameworks for specific sectors. While the overarching motivations for engagement are becoming clearer, there remains a distinct need for further research to refine the approaches tailored to complex stakeholder groups, such as industry partners and policy-making bodies. Future inquiry will be essential to bridge these gaps, ensuring that engagement strategies are not only inclusive but also strategically aligned with the nuanced requirements of the broader cancer research ecosystem.

## WHO CAN APPLY?



Any organization<sup>1</sup> based in Europe that works in or with cancer research and care, as well as institutions that may be considered relevant for teaching, learning, research and development in the broad sense with relation to cancer research can be considered eligible applicants. These include:



NGOs, patient and family/support groups, community organizations



Biobanks and research infrastructures



Hospitals and clinics



Universities and schools

<sup>1</sup> Any legal entity established in a European country that has legal personality under applicable national law. This includes public or private bodies that are formally constituted and have the legal capacity to submit contracts, assume obligations, and receive funding in their own name.

The call primarily aims to support academic, healthcare, civil society, and not-for-profit stakeholders. Large for-profit enterprises whose primary activity is commercial product development may participate as partners, where leadership and primary benefit remain with eligible not-for-profit organizations.

In engagement activities with multiple partners, one organization must act as coordinator. A coordinator may submit one proposal but may be a partner in other proposals.

## WHAT KIND OF ACTIVITIES ARE ELIGIBLE?

The call is open to any suitable engagement format, both theoretical and practical in nature, for example innovative participatory and co-creative formats, educational and capacity-building initiatives, arts-based and creative approaches, or communication and public outreach activities (see further below).

### The activity must:

1

Address a local or regional need in cancer research or care with an explicit link to at least one of the four [Mission: Cancer objectives](#) (understanding cancer, prevention and early detection, diagnosis and treatment, and improving quality of life);

2

Include people fairly (patients, carers, clinicians, researchers, policy makers, industry, communities...), paying special attention to underserved groups whenever possible (e.g., minors, rare-disease communities, minorities...);

3

Include original bottom-up approaches with an innovative component, or present substantial improvements to previous initiatives that represent a quantifiable enhancement and impact to the current state of the art.

4

Include the safety and ethical perspective on the proposal approach, by following local laws, EU law, and international ethical principles, and reflect on ethics and society aspects in cancer research.

5

Finish in time to submit the final report by 31 August 2027. Reporting should be openly accessible where legally permitted.

Examples of initiatives that may be submitted could include (not exhaustive list):

- Participatory design & co-creation activities (workshops, co-design sessions, community dialogues, focus groups, surveys, citizen juries, town hall events, hackathon or citizen labs; etc.)
- Educational, pedagogical & capacity-building actions (school programs, gamification, seminar, workshop, course; etc.)
- Cultural, artistic & creative engagement (pop-up exhibits, creative works -literature, visual arts, cinema-; events, exhibitions, works of artistic creation; etc.)
- Communication, dissemination & public outreach (digital content such as video, podcast; videos for children; simulation activities (escape-room, virtual reality, etc.); video games, other games; etc.)
- Proposals for the application and validation of new techniques, methodologies or scalable solutions (validated models, prototypes, scalable practices; etc.)
- Activities to improve informed-consent processes and documents (e.g., comprehension checks; iterative refinement cycles based on participant feedback; accessibility testing for low-literacy, multilingual, and disability-inclusive needs).
- Guidance, publications, standards & practical resources (how-to guidelines, decalogues, manuals; tools and materials enabling multi-stakeholder collaboration; website, digital application, software; platform, network, association; etc.)
- Others



## THE AMOUNT OF FUNDING AND USE

The maximum amount that can be requested for each proposal is €10.000. PERFORMANCE has a total budget of €150.000 that is reserved for providing funding for 15 engagement activities. **It is very important that all the costs are justified with original invoices or internal documentation so that the reimbursement can take place once the engagement is concluded and the report of engagement is approved.** Below is the list of eligible and ineligible cost categories for the engagements.

- **Eligible costs:** *personnel (documented via timesheets of personnel involved in the activity as well as hourly rates for employees), consumables, software, travel, rental (e.g., venues, equipment hire), services (e.g., website design, video production, translation/interpretation services).*
- **Not eligible:** *buying equipment (unless the activity depends on the item, e.g., virtual reality headsets for virtual reality-based engagement and only if renting is not feasible); profit mark-up on cost items; VAT on invoices of external service providers.*
- *Co-funding is encouraged. You may receive support from other funders to enable the engagement activity to be conducted; however, the same cost cannot be reimbursed twice.*

If a proposal is evaluated positively, a contract containing essential legal and financial provisions will be concluded between BBMRI-ERIC, as the budget holder, and the organisation that submitted the proposal.

In duly justified cases, a limited pre-financing payment may be granted to support the start of the activity, subject to prior request and approval, and in accordance with the project's financial procedures.



# IMPORTANT DATES

## Calendar

---

Call announced: 17 March 2026

Deadline for submissions: 31 May 2026



## Evaluations

---

Individual evaluations completed: 5 Jun 2026

Panel meeting(s): 8–12 Jun 2026

Ethics Advisor check (if necessary, after panel meeting): 15–19 Jun 2026



## Award

---

Award notice: 29–30 Jun 2026



## Finalisation

---

Final report of engagements due: 31 Aug 2027

Payment: 100% within 3 weeks after final-report approval



## SUBMISSION OF THE PROPOSALS

Proposal submissions take place online via e-mail and in English. The applicants should download the application form including the budget template from the [project website](#) (see Annex I). The application is submitted via e-mail by sending the completed application form to [opencall.periformance@bbmri-eric.eu](mailto:opencall.periformance@bbmri-eric.eu) with the subject “**Open Call Submission: [Submitting organization’s name]**”. All submissions will be registered in a call management log including date and time of receipt. Proposals received after the submission deadline will not be evaluated. Applicants will receive an automatic confirmation of receipt within 48 hours.

If multiple institutions take part in the proposal, communication must be made through the coordinating institution and only the coordinating institution submits the application. Upon successful submission, the applicant will receive an acknowledgement e-mail within 7 days. It is highly recommended not to wait until the submission deadline.

## EVALUATION AND SELECTION OF THE PROPOSALS: OVERVIEW

**Eligibility check:** Proposals are first checked for eligibility as part of PERIFORMANCE T4.1.

**Individual evaluations:** Eligible proposals receive at least two independent evaluations by qualified experts, by a mixed panel of internal (PERIFORMANCE project participants including patient representatives and scholars involved with the project) and external evaluators (invited external experts including current and former members of BBMRI-ERIC ELSI Helpdesk Network, upon signing a Non-Disclosure Agreement) in line with the criteria described below, with at least one external evaluator not affiliated with the PERIFORMANCE consortium. If a proposal receives scores that have a difference of 2 full points or more, a third review is conducted and the average of the three is taken.

**Panel meetings:** Following the individual reviews, the reviewers convene in a panel and meet online once to agree on a selection list according to the evaluation criteria. From the ranked listed (from the highest to the lowest scores), the highest scoring 10 proposals are automatically selected (direct selection) for funding unless there is a majority vote to exclude any of these proposals upon serious grounds, such as ethical concerns that cannot be remedied, closure of the applicant entity, etc. Among the remaining higher scoring proposals, 5 are selected based on representational capacity, in case these are not covered in the selected 10 proposals (indirect selection). At the end of the evaluation, you will receive an evaluation result letter (ERL), which includes the evaluation summary report with detailed feedback on your proposal.

**Ethics check and announcement of the results:** Before the announcement of the results, the PERIFORMANCE Ethics Advisor reviews the provisional list of the 15 highest scoring proposals and may add ethics conditions to awards where needed. All applicants receive a decision letter.



# EVALUATION CRITERIA



## CRITERIA AND EVALUATION RUBRIC



The following general criteria apply to all proposals in the evaluation phase, where each proposal will be scored out of 10 by each individual evaluator and the average of these scores will constitute the sole ranking criterion. Each proposal will be evaluated against the criteria listed below.

Minimum thresholds apply:

- Minimum score per criterion: 50% of the maximum score
- Minimum overall score: 6/10

Proposals failing to reach the thresholds will not be considered for funding, regardless of ranking position.

### Design quality and feasibility (4)

- o Does the engagement employ the appropriate method/design for the proposed aim?
- o Is it sufficiently innovative in this case and context?
- o Is the engagement plan realistic with sufficient identification of risks and management plan?
- o Is it feasible including in terms of aligning with the set deadlines?

### Inclusion, accessibility and sustainability (2)

- o Does the engagement sufficiently involve stakeholders, including underrepresented groups and address barriers for underserved groups (including but not only the translation/interpretation/accessibility)? Is it bottom-up?
- o Does the engagement consider potential bias and discrimination regarding, e.g., sex, gender, ethnicity?

### Relevance to Mission: Cancer (3)

- o *Does the engagement sufficiently relate to one or more of the Mission: Cancer Goals?*
- o Does the engagement respond to the local needs sufficiently?

### Data protection, societal and ethical aspects (1)

- o Are the relevant societal and ethical aspects considered/reflected about? Has the applicant confirmed/justified/explained that either the engagement does not necessitate an ethics approval or these requirements are met before the starting of the engagement activities?
- o Is the application presenting careful attention to data protection needs and are these met by the design (including but not limited to photos, recordings, collection of personal data as part of the engagement activity or its planning)?

## PROCESSES OF RANKING, DIRECT AND INDIRECT SELECTION

After each proposal is evaluated by at least two evaluators who do not have conflict of interest (defined as follows: no personal or professional relationship with the applicant person or institution or the partners in the application that is under evaluation) and based on the average scores, all proposals are listed from the highest to the lowest score. The panel comprising of evaluators meets to make funding decisions. The highest scoring 10 proposals are automatically selected, i.e. direct selection, for funding unless the evaluation panel identifies serious legal, ethical, financial or feasibility concerns documented in the panel report.

Among the next higher scoring proposals, 5 are selected on the basis of representational capacity (indirect selection) as long as they fulfil the criteria used in evaluation and in case the following representational aspects are not sufficiently covered in the selected 10 proposals as follows:

- If any of the following countries are not represented in the direct selection as sites of engagement or if the named countries are represented, but the sites of engagement are not amenable for qualitative study (T4.2), the indirect selection will select the highest scoring proposals in the ranking list from the respective countries: Austria, Belgium, Estonia, Latvia, Malta and the Netherlands. (Rationale: Due to the planned qualitative analysis to be conducted as part of the task T4.2, the researchers of the PERFORMANCE consortium need to be able to observe/follow at least one engagement in the countries of their institution.)
- If all the countries listed above are represented in the final selection and still 15 proposals are not selected, or if 15 proposals are selected, but further funding is available due to the lower amounts requested, the remaining places will be filled by the highest-scoring proposals for engagement formats that are not already represented among the selected proposals (e.g. deliberative workshops, citizen juries and participatory design sessions).
- The panel lists three highest ranking additional proposals as reserve list.
- The application of representational criteria will be **fully documented in the panel report**, explaining how the criteria were applied.

Before the announcement of the results, the PERFORMANCE Ethics Advisor reviews the provisional list of the highest scoring proposals and may add ethics conditions to awards where needed. All applicants receive a decision notification.



“PERFORMANCE stands for inclusive and ethical collaboration across science, society, and technology to foster innovation, trust, and shared progress in the fight against cancer.”

## OTHER ASPECTS

### PRIVACY POLICY

We would highly recommend the organizers to have an easy-to-understand and transparent privacy policy to inform engagement participants drafted before the engagements. These privacy policies fall within the responsibilities of the organizers of the engagements.

Due to the reporting and qualitative social sciences components, the PERIFORMANCE consortium will collect certain data on the engagement activities based on a Data Management Plan and the approval by an ethics committee. If applicants need help in drawing up informed consent procedures for their activities, the PERIFORMANCE partners will be happy to help.

Organisers of engagement activities must comply with EU General Data Protection Regulation (GDPR) and applicable national data protection laws.

### CONDITIONS FOR THE AWARD

Following notification of the selected engagement proposals, funding or support for them will be provided on a contractual basis, which will establish the obligations of the parties for the execution of the engagement in terms of deadlines and reporting responsibilities.

Projects will have a maximum duration of 12 months, from the signing of the contract to the delivery of results and must be completed until August 2027.

Funding will be provided as a **fixed grant amount up to €10,000** per engagement activity.

In exceptional cases, **limited pre-financing may be granted upon justified request**. Beneficiaries must comply with applicable **EU restrictive measures (sanctions)** and relevant national legislation.

Payments will be made in accordance with the terms of the contract and within the deadlines specified and agreed therein, once the necessary obligations are met.

Beneficiaries must publicize the support received, mentioning PERIFORMANCE's support and collaboration in all information, verbal or written, issued in connection with the activity, before, during and after its completion as well as to acknowledge EU support and display the European flag (emblem) and funding statement (translated into local languages, where appropriate). Recipients must state that the activity is "funded by the European Union through the PERIFORMANCE project".

The emblem must remain distinct and separate and cannot be modified by adding other visual marks, brands or text. When displayed in association with other logos (e.g. of PERIFORMANCE, beneficiaries or sponsors), the emblem must be displayed at least as prominently and visibly as the other logos. The beneficiaries must promote the action and its results by providing targeted information to multiple audiences (including the media and the public), in a strategic, coherent and effective manner.



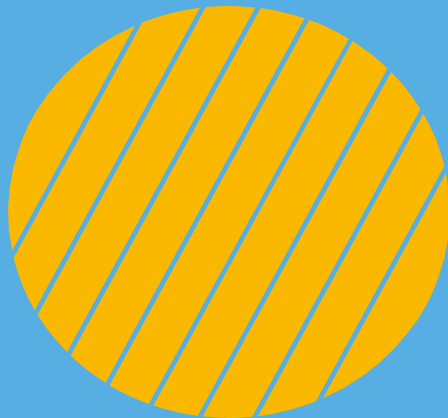
Funded by the  
European Union

In case, Intellectual Property Rights directly relate to the work conducted under PERIFORMANCE project, these are covered in the relevant clauses of the PERIFORMANCE Consortium Agreement. In general terms, the product(s) resulting from the project shall be the property of the entity that creates it, but BBMRI-ERIC, as project coordinator, and its consortium members shall be authorised to dispose of and use them in other contexts, always ensuring the recognition and visibility of the authorship of the organisation and/or persons developing the project.

Further collaboration with BBMRI-ERIC would be welcome following the project, particularly to support community building and the potential sharing of expertise. Such collaboration could help strengthen sustainability and facilitate the wider dissemination of knowledge within relevant communities.

The PERIFORMANCE consortium will maintain records of the call publication, submitted proposals, evaluation reports, panel decisions and communications for audit and transparency purposes.

# FREQUENTLY ASKED QUESTIONS



You may find below the frequently asked questions and answers regarding the open calls for engagement.

### **Is there going to be an information session on the open call?**

Yes, there will be at least one information session on the open call within the period March-May 2026, which will be announced on the PERIFORMANCE website and our social media links. If you have missed the information session, you will be able to find the presented slides which will be provided on the PERIFORMANCE website and this list of FAQs will be updated following the Q&A.

### **Where can I learn more about PERIFORMANCE?**

Here are the links to our website and social media accounts:

WEBSITE: <https://periformance.com> / <https://periformance.eu>

LinkedIn account: <https://www.linkedin.com/company/eu-periformance-project/>

Blue sky account: @euperiformance.bsky.social

### **Based on your preliminary research, can you provide some resources to learn more on engagement activities?**

Resources providing some theoretical background:

- Cañada JA, Tupasela A, Snell K. Beyond and within public engagement: a broadened approach to engagement in biobanking. *New Genet Soc.* 2015;34(4):355-76. doi: 10.1080/14636778.2015.1105130.
- [Council for International Organizations of Medical Sciences \(CIOMS\) - 2016 - International Ethical Guidelines for Health-related Research involving Humans](#)
- [Common Minimum Technical Standards and Protocols for Biobanks Dedicated to Cancer Research](#)
- [ISBER Best Practices: Recommendations for Repositories Fifth Edition](#)
- Mayeur C, Howard HC, Van Hoof W. A citizen-centred approach to public engagement on the ethical, legal and societal issues of health technologies. *Public Underst Sci.* 2025;34(7):901-15. doi: 10.1177/09636625251326490.

Practical examples of engagement activities

- Klingler C, von Jagwitz-Biegnitz M, Baber R, Becker KF, Dahl E, Eibner C, et al. Stakeholder engagement to ensure the sustainability of biobanks: a survey of potential users of biobank services. *Eur J Hum Genet.* 2022;30(12):1335-45. doi: 10.1038/s41431-021-00905-x.
- Pezzolo F, Kinkorová J, Št'astná M, Cimburek Z, Topolčan O, von Heymann C, et al. Quality management at the national biobanking level – establishing a culture of mutual trust and support: the BBMRI.at example. *Clin Chem Lab Med.* 2020;58(2):167-75. doi: 10.1515/cclm-2019-0491.
- Different webpages from BBMRI member states describing their engagement activities:
  - BBMRI.de: <https://www.bbmri.de/biobanking/stakeholder-engagement/>

- BBMRI.at (for researchers): <https://bbmri.at/for-researchers/>
- BBMRI.at (for citizens): <https://bbmri.at/for-citizens/>
- BBMRI.be: <https://www.bbmri.be/stakeholders/>
- BBMRI.nl: <https://www.health-ri.nl/en/about/organisation/public-policy-affairs/patient-public-advisory-committee>

### **What should I do if I cannot decide if my institution is eligible or not?**

After thoroughly reading the documentation on the PERIFORMANCE website, if you still cannot decide whether your institution is eligible, please contact us with your question.

### **When is the deadline for submissions?**

The deadline for submitting your proposal is 31.05.2026, 23:59 (Central European Time). Please submit your application earlier to make sure it arrives on time and you receive the notification of receipt before the deadline. Please note it may take up to a week until you receive the notification.

### **How do I know if my application is processed?**

Following the submission, you will receive an e-mail notification within 48 hours that we have received your application and processing it. After this stage, there will not be any further information (other than exceptional circumstances) until the completion of the selection process. The outcome of the process will be announced transparently.

### **Why is there a need for an ethics approval or the confirmation that an ethics approval is not needed?**

Ethical aspects are not only relevant for biomedical research but should be considered thoroughly, especially considering the potential involvement of vulnerable groups in engagement activities. Therefore, we ask you to consider the ethical aspects regarding your proposed activity and inquire whether you need an ethics approval to conduct the activity (as required by national law). You may also refer to the guidance provided by the European Union for the EU Grants: [How to complete your ethics self-assessment?](#) for going through the items listed to see if you identify any relevant aspects.

### **I understand that at least some of the PERIFORMANCE funded engagement activities will be followed by social scientists. What does this social scientific research involve? Do I need to include anything in the application regarding this?**

Social sciences research (T4.2) to be conducted as part of the open call for engagements is a very important component of the PERIFORMANCE project. This qualitative research may take multiple shapes (e.g., interviews with the engagement organizers, participant observation during the engagement, etc.) depending on the engagement itself, the necessities and appropriate methods. These will be determined once the proposals are selected, in line with the availabilities and expertise of the relevant members of the social sciences team in WP4. As part of the application, there is no need to refer to this component unless

you see fit. However, all applications need to confirm that they are committed to support this research in case their proposal is selected and funded as this is part of the project set up for knowledge production on engagements.

### **Can I receive the funding before the activity is concluded?**

In duly justified cases, a limited pre-financing payment may be granted to support the start of the activity, subject to prior request and approval and in accordance with the project's financial procedures.

### **What does double funding mean?**

Double funding/financing in relevance to this open call is the practice of submitting the same item of expenditure (i.e., a specific cost) to different sources (e.g., through open call and local funding agency) separately in order to obtain financial support from all of them. This is not allowed.

### **Can I ask for higher or lower funding?**

In terms of budgeting your costs, please take into account that we cannot provide more than €10,000 to a single engagement activity. It is possible that your proposal receives further funding to cover the remaining costs (e.g., institutional funds, other funding); however, this must be clearly communicated as part of your application and should not lead to double funding. There is no lower limit for the funds that can be requested.

### **Can there be a collaboration across two funded activities?**

Once the activities are selected, we will be able to provide further information on the process (e.g., monitoring and reporting) with a dedicated event, which will be an opportunity to get to know the other selected activities and participants. Collaborations, especially in communication and dissemination, across activities are highly appreciated.



# ANNEX I: APPLICA TION FORM



# DECLARATION OF ELIGIBILITY AND READINESS FOR COLLABORATION

- I declare that I am allowed to apply for this funding on behalf of my institution and all the partners involved for engagement.
- I confirm that I am aware that as part of the PERIFORMANCE project WP4, research on engagements may be conducted on individual engagement activities and the proposed engagement will be committed to support this research, if needed.
- I confirm that my organization is eligible for this funding as it fulfils the relevant criteria.

SIGNATURE: \_\_\_\_\_

## DETAILS of the engagement activity

**Applicant institution and short description of the institution:**

**Applicant person and role in the applicant institution:**

**Contact details:**

**Partners involved for engagement and their role:**

#	PARTNER	ROLE	PERSON RESPONSIBLE
---	---------	------	--------------------

---

---

---

**Description of the proposed engagement activity (max. 1000 words):**

*While writing your description, please consider all the criteria and the evaluation details in the call text as these will be the basis for selection of the proposals to be funded. Please explicitly refer to your proposal's relevance to EU's Mission: Cancer and how you consider the local context, the stakeholder needs, as well as inclusion, accessibility and sustainability. You may structure your description based on the main categories of the criteria for simplicity.*

**Description of the expected outcomes and impact of the proposed engagement activity (max. 350 words):**

**Please describe potential risks and how these are to be mitigated. Be as detailed as possible including, ethical and societal implications, physical and non-physical risks, and the mitigation measures (max 350 words):**

*Regarding ethical aspects, you may refer to the guidance provided by the European Union for the EU Grants: [How to complete your ethics self-assessment?](#) for going through the items listed to see if you identify any relevant aspects.*

# ETHICS APPROVAL CHECKLIST

Please confirm one of the following:

- For the proposed activity, the necessary ethics approval will be acquired, and this approval will be provided to the PERIFORMANCE team as soon as possible if the proposal is selected.
- For the proposed activity, no ethics approval is necessary according to the national laws and institutional regulations.
- Other (explanation):

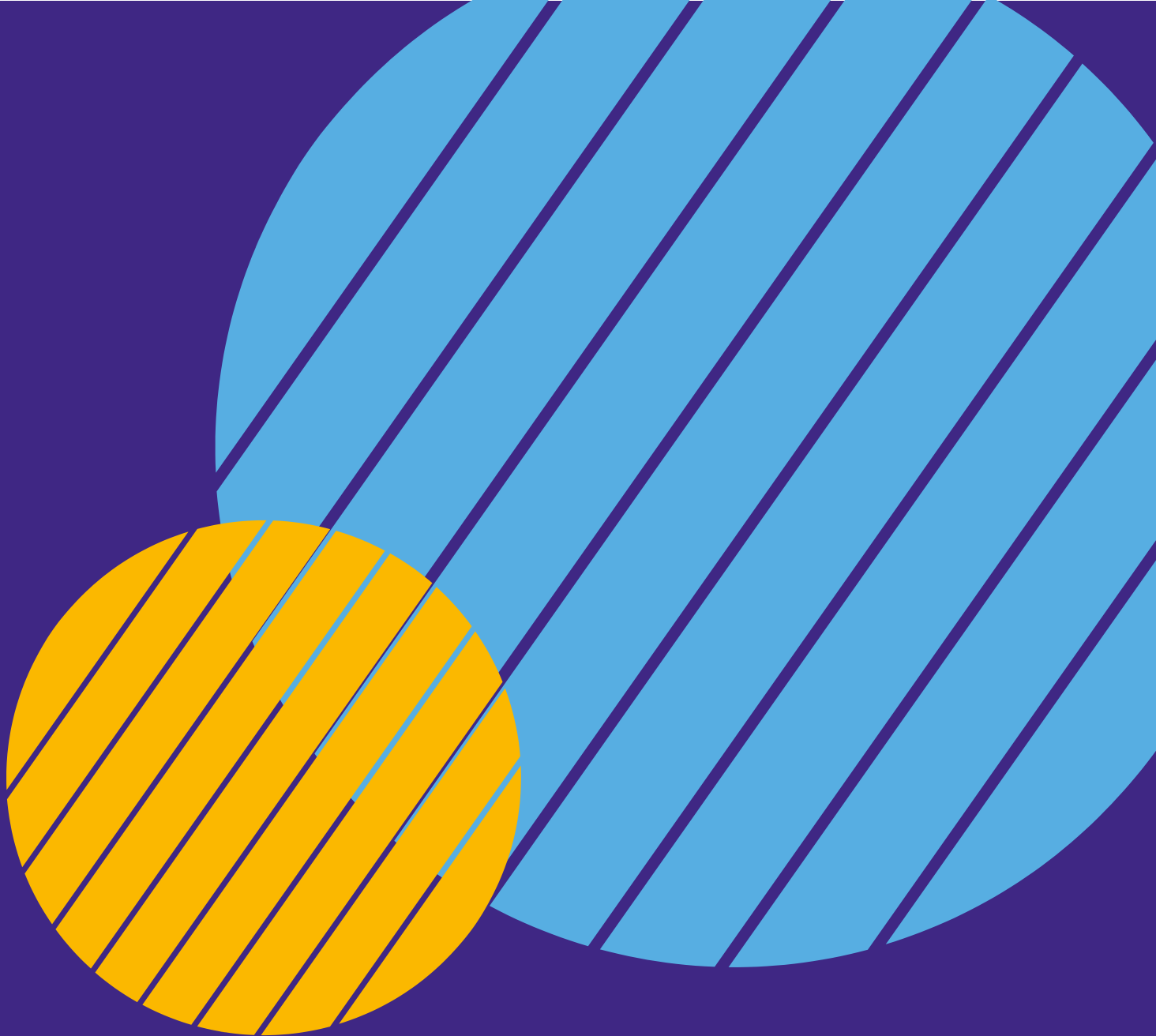
## BUDGET TABLE

Please follow the guidance document in preparing your budget table and include in the budget table only the items for which funding is requested. In case that you are receiving complementary funding, please provide details regarding what this funding covers and confirm that you are not requesting funding for items that are funded by other entities (*no double funding for the same item*).

- I confirm that all items listed are necessary for conducting the engagement activity
- I confirm that no double funding for the same items is requested or received. I confirm that in the case that I am granted and receive PERIFORMANCE funding, I will report any other funding received for the engagement activity.

**Please provide a justification for the requested funding (max. 350 words):**

Cost Category	Description of Cost	Unit / Quantity	Unit Cost	Total Cost	Requested from PERIFORMANCE	Co-funding (in €)
Personnel	Staff time for planning, coordination, and implementation of engagement activity					
Travel	Travel costs for speakers, facilitators, or team members (transport, accommodation if needed)					
Rental	Venue hire, equipment hire, or other temporary infrastructure rental costs					
Consumables	Materials used during the engagement (printing, workshop materials, etc.)					
Software	Software licenses or digital tools needed for the activity					
Services	External services (e.g., website design, video production, translation/interpretation)					
Other Eligible Costs	Any additional eligible costs with justification					
<b>TOTAL</b>				<b>0</b>	<b>0</b>	<b>0</b>



**PERIFORMANCE**  
Science with Society for Mission Cancer



PERIFORMANCE has received funding from the Horizon Europe research and innovation programme under grant agreement N. 101216808.